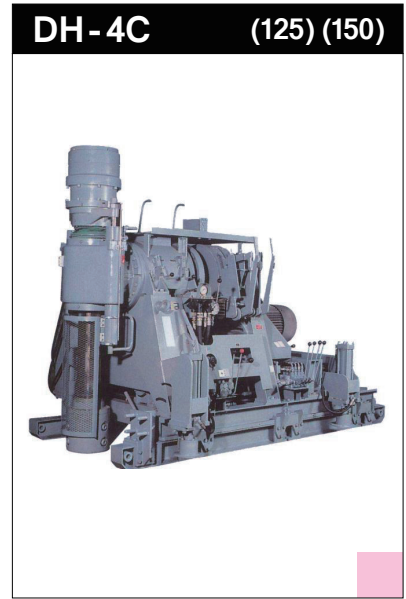
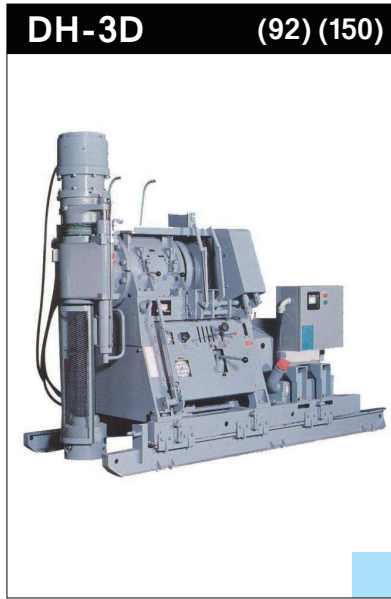
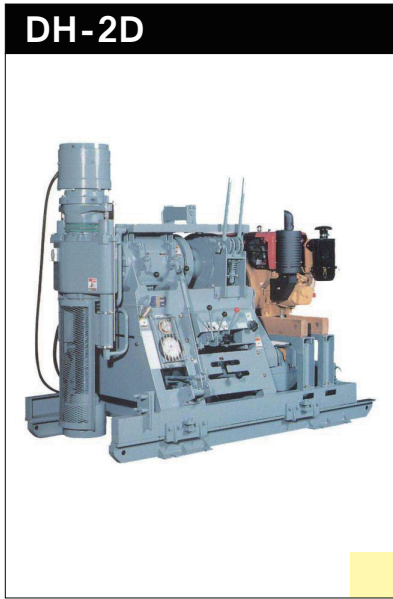


Spindle Type: **DH** SERIES



DH-2D / DH-3D / DH-4C

- Mid- to large-sized machine with ample thrust force, balance and torque
- Used for foundation pilings, landslide prevention pilings, and water well drilling
- Standard equipment
 - └ Oil hydraulic chuck

MODEL	DH-2D	DH-3D		DH-4C	
I.D. of spindle (mm)	79	92	150	125	150
Spindle speeds (rpm)	30:105:220:26(R)	30:70:200:27(R)	20:47:130:18(R)	30:68:207:25(R)	28:66:185:22(R)
Torque (kN·m)	3.43 {350kgf·m}	4.77 {490kgf·m}	7.16 {730kgf·m}	8.03 {820kgf·m}	8.73 {890kgf·m}
Stroke of spindle (mm)	500	600		600	
Thrust force (kN)	29.7 {3030kgf}	51.8 {5290kgf}	75.4 {7690kgf}	90.5 {9230kgf}	
Balance force (kN)	39.6 {4040kgf}	77.0 {7850kgf}	100.5 {10260kgf}	120.6 {12310kgf}	
Slide system (mm)	Oil hydraulic: stroke 500	Oil hydraulic: stroke 500		Oil hydraulic: stroke 600	
Power	11kW/4P or 15~20PS/1800r.p.m.	15kW/4P or 20~30PS/1800r.p.m.		30kW/4P or 40PS/1800r.p.m.	
Dimensions (L x W x H) (mm)	2075 x 1055 x 1680	2530 x 1250 x 2060	2670 x 1500 x 2100	2920 x 1390 x 2140	2985 x 1390 x 2190
Mass (kg)	1360	2140	2360	3170	3800

Jack-up system and break-up system are optional equipment

I.D. of spindle: 125mm is standard

Outrigger is optional equipment



USED FOR

Geologic survey

Bore piling

Anchor hole

Well drilling