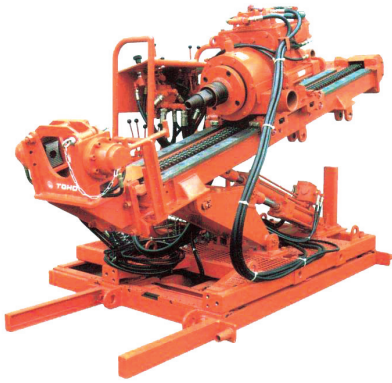


K0-C



K Series

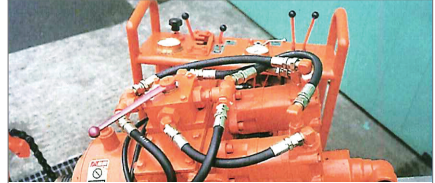
- Suitable for water drainage against landslide / Anchor hole for retaining wall
- All oil hydraulic operation
- Double tube drilling

Power ring bit system (Japanese Patent)



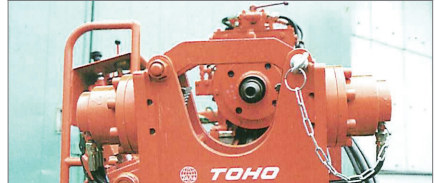
Rotary percussion drilling
Excellent in excavation efficiency

Speed switching valve K0-C



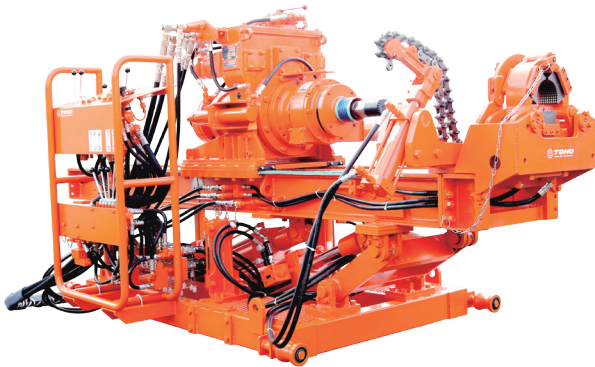
Easy to switch speed

Oil hydraulic holder K0-C



Chucking firmly

K1-B



High speed inner head



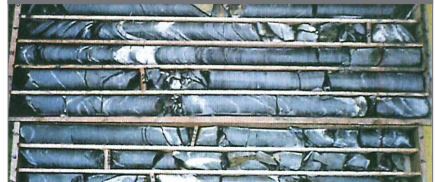
Diamond bit available

Base for vertical drilling style K0-C



Wide range of drilling angle

Core sampling



Core sampled by K1-B with high speed inner head

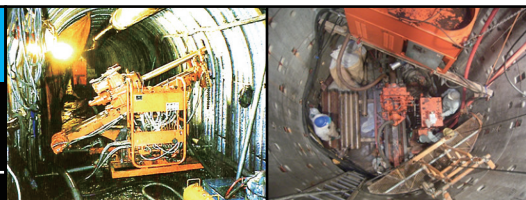
MODEL	K-0C	K-1B
Drilling angle	0~90°	0~48°
Diameter of usable pipe (mm)	Inner pipe : 76.3 (Max) Outer pipe : 139.8 (Max)	Inner pipe : 89.1 (Max) Outer pipe : 165 (Max)
Spindle speeds (rpm)	High speed : 50Hz: 0~34 60Hz: 0~40 Low speed : 50Hz: 0~17 60Hz: 0~20	High speed : 50Hz: 0~50 60Hz: 0~60 Low speed : 50Hz: 0~25 60Hz: 0~30
Torque(Max) (kN·m)	High speed : 2.15 {219kgf·m} Low speed : 4.3 {438kgf·m}	High speed : 3 {306kgf·m} Low speed : 6 {612kgf·m}
Feed speeds (m/min)	12 (Max)	14 (Max)
Feed length (mm)	1400	1400
Spindle stroke (mm)	150	250
Thrust force (kN)	Inner pipe : 12 {1224kgf} Outer pipe : 25 {2550kgf}	Inner pipe : 35 {3570kgf} Outer pipe : 65 {6630kgf}
Balance force (kN)	Inner pipe : 17.5 {1785kgf} Outer pipe : 25 {2550kgf}	Inner pipe : 55 {5610kgf} Outer pipe : 65 {6630kgf}
Power unit	Unit: 15kW/4PS Oil heater: 3kW Oil cooler: 0.1kW	Oil hydraulic unit: 30kW/4P
Dimensions (L x W x H) (mm)	Machine: 2620 x 870 x 1130 Oil hydraulic unit: 1300 x 610 x 1250	Machine: 2720 x 1350 x 1400 Oil hydraulic unit: 1700 x 750 x 1155
Mass (kg)	Machine: 830 Oil hyd.unit: 650	Machine: 1440 Oil hyd.unit: 1000

Other type: Stroke of thrust head is 1900mm and 2400mm

Oil hydraulic chuck is optional equipment

USED FOR

Water drainage



Anchor hole

